

LPLVSJ | LPLESJ – DRUVA® PUR LINE REGULATOR

LINE REGULATOR | PURE LINE (BRASS CHROME PLATED) | 20m³ SERIES | LOW PRESSURE RANGE
SINGLE STAGE | 6-PORT VERSION



This single-stage line pressure regulator is used in gas supply systems for pure, inert, flammable, oxidising gases and gas mixtures up to gas purity 6.0. It is not usable for corrosive and / or toxic gases and their mixtures.

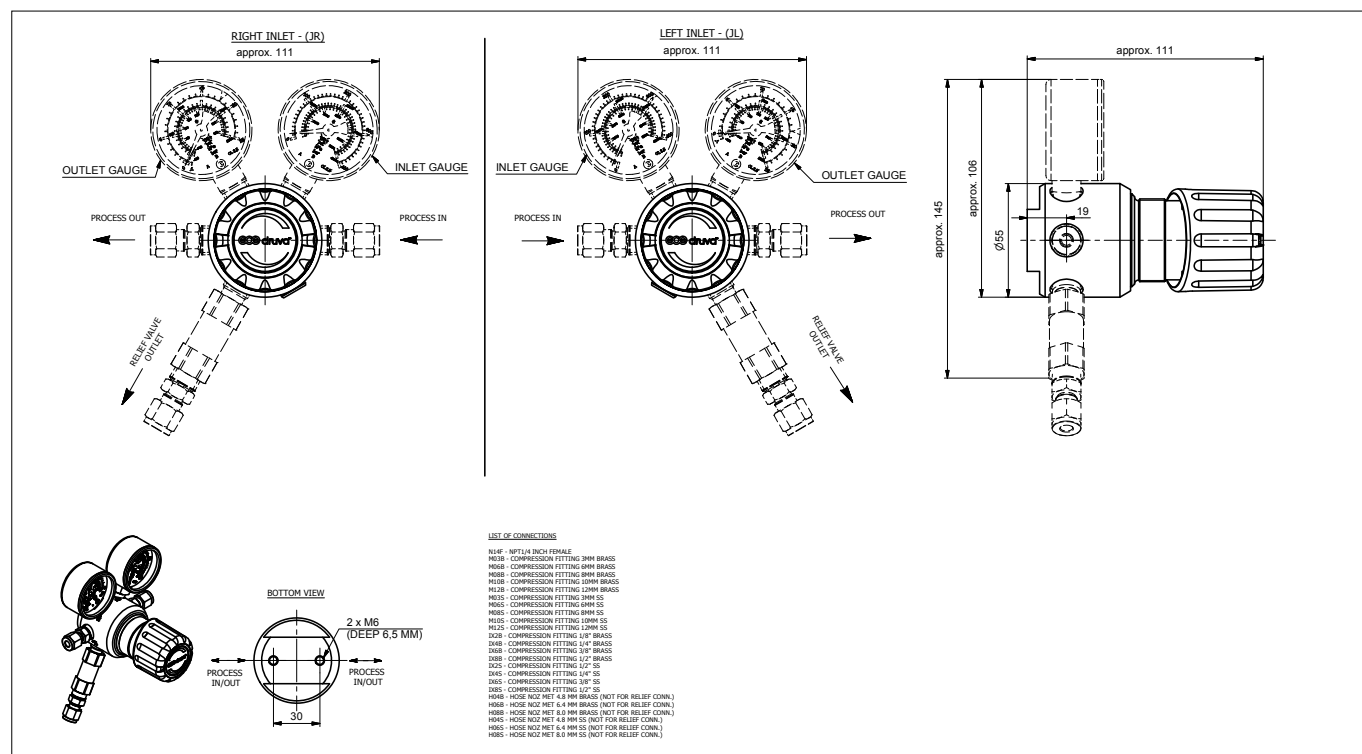


SPECIAL FEATURES:

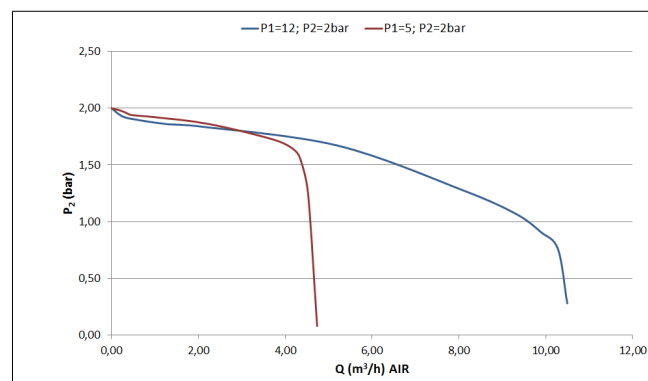
- > Hastelloy diaphragm tightening system to atmosphere
- > Compact design
- > Excellent pressure adjustment
- > Designed and approved regarding ISO 7291
- > Relief valve in delivery pressure side available
- > Electrostatic chargeability test
 - Fulfills requirements according to ISO 80079-36; IEC TS 60079-32-1 and German TRGS 727
 - Usable in EX- areas zones 1 and 2 for gases with explosion risk group I; IIA; IIB; IIC

TECHNICAL DATA	
Working temperature:	-20 °C to +60 °C
Inlet / outlet ports:	See technical drawing
Leakage rate seat:	<5x10 ⁻⁶ mbar l/s (Helium)
Leakage rate outside:	<1x10 ⁻⁹ mbar l/s (Helium)
Filter:	1x for inlet 1x for each outlet
Weight:	1,37 kg
Flow nominal:	3 m³/h
Material gas wetted parts:	
Regulator body:	Brass chrome plated
Regulator diaphragm:	Hastelloy
Regulator seat:	
LPLVSJ-Version	FKM
LPLESJ-Version	EPDM
Relief valve seat:	
LPLVSJ-Version	FKM
LPLESJ-Version	EPDM
Regulator poppet:	Brass
Pressure rates line regulator:	
Max. inlet pressure	12 bar
Delivery pressure	1 bar / 2 bar
Pressure gauges rates (pressure rates):	-1 bar till 1,5 bar (1 bar) / -1 till 5 bar (2 bar)
Contact gauges available – please contact us	
Cracking pressure relief valves:	1,54 bar (1 bar) / 3,08 bar (2 bar)
Test in production:	Pressure test with Helium of each item
	Seat leakage test with Helium of each item
	Helium leak test of each regulator against atmosphere
	Test of functionality of each item
Approvals during development:	Type test in accordance with ISO 7291
	Additional life cycle test
	Electrostatic chargeability test
	<ul style="list-style-type: none"> • Fulfill requirements according ISO 80079-36; IEC TS 60079-32-1 and German TRGS 727 • Usable in EX-areas zones 1 and 2 for gases with explosion risk group I; IIA; IIB; IIC

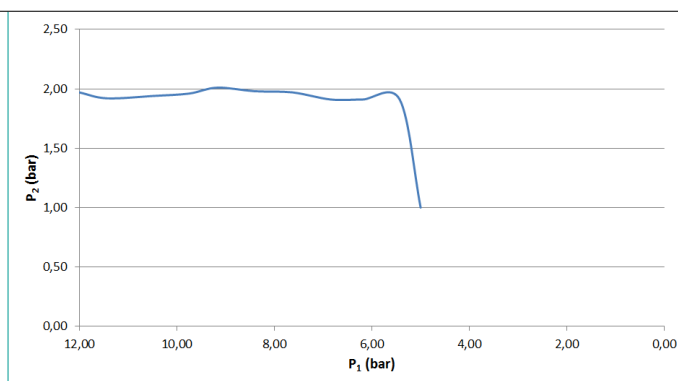
TECHNICAL DRAWING:



FLOW CURVES:



DYNAMIC EXPANSION CURVES:



ORDER CODE:

Example Line Regulator | PUR Linie | Brass Chrome Plated | Low Flow | Low Pressure | Single Stage | 6-Port Version

LPLLSVJ		R	D1	AX	00	BT	N14F (1/4" NPT female)	N14F (1/4" NPT female)	00	0001
		Porting	Inlet pressure	Outlet pressure	Inlet gauge	Outlet gauge	Inlet connection	Outlet connection	Safety device	Relief valve connection
R	Inlet right	D1 12 bar	AY 1 bar	00 Without 1/4" NPT female	00 Without 1/4" NPT female	possible connections	possible connections	00 Without 1/4" NPT female	0001 – if no safety device is chosen possible connection if safety device RV is choosen see technical drawing	
L	Inlet left		AX 2 bar	01 Without (plugged)	01 Without (plugged)			01 Without (plugged)		
				BT Bourdon Tube gauge	BT Bourdon Tube gauge			RV Relief valve		
				I1 Inductiv contact gauge I1		see technical drawing	see technical drawing			
				R5 Reed contact gauge R5						

Order code (as described above) without special characters or spaces! Complete Order Code **LPLLVSRD1AX00BTN14FN14F000001**

